

ANGLED SIDE BASKETS

1" TANK FILL VALVE

2" MALE OVER-BOARD SUCTION CAP

FLOATING FOAM CELL 1/2" HYDRANT FILL

FOAM FLO CONTROL

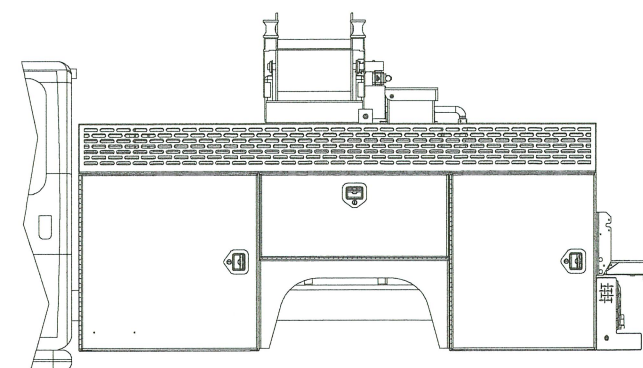
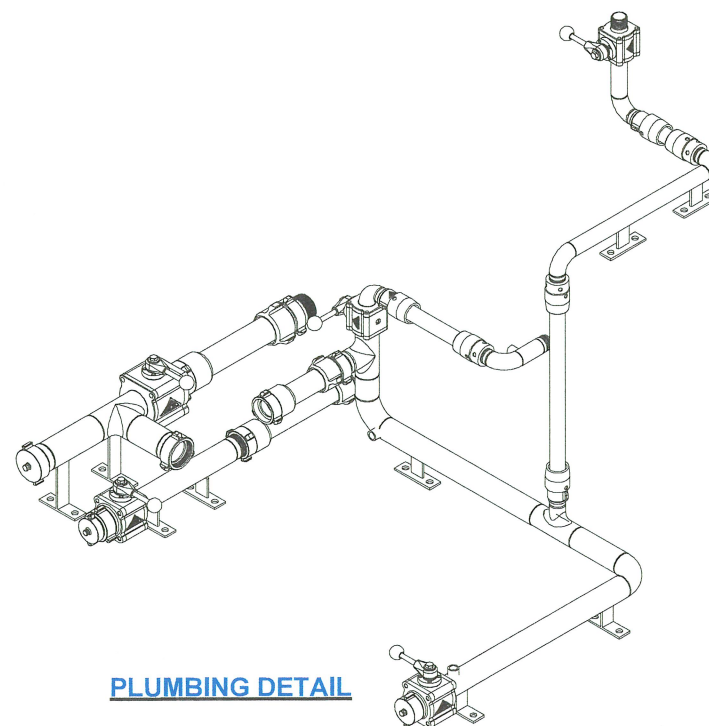
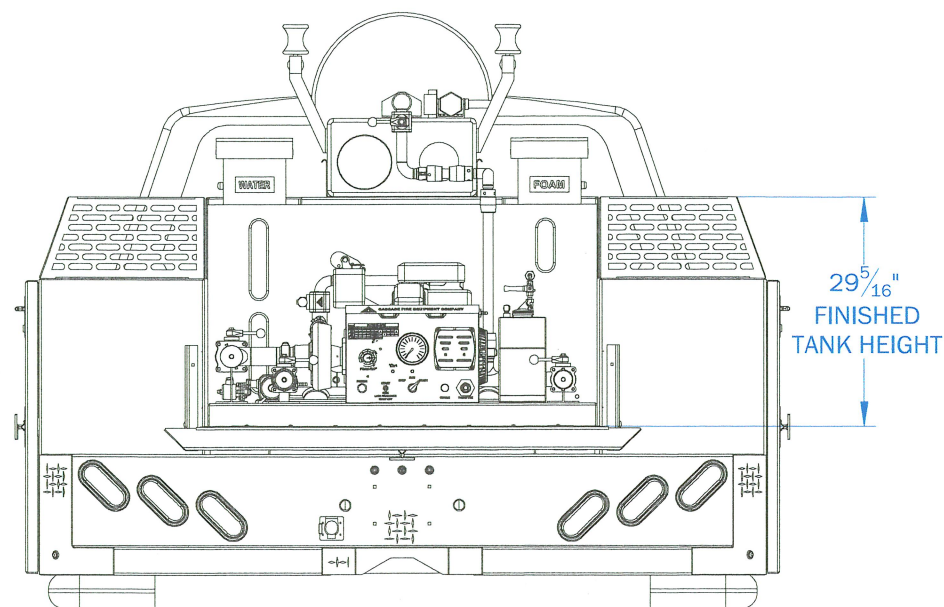
PUMPER CONTROL PANEL WITH WATER AND FOAM GAUGES

4 GALLON ALUMINUM FUEL TANK

1 1/2" MALE DISCHARGE VALVE

12" PASS-THRU SECTION IN FRONT COMPARTMENTS

REEL REWIND BUTTON (BOTH SIDES)



49 1/2" W x 63" L x 26 3/8" H
POLYPROPYLENE TANK
WATER: 300 GALLONS
FOAM: 5 GALLON CELL
FOAM SYSTEM: FOAM-FLO
MOTOR: 18 H.P. VANGUARD
PUMP: CASCADE CF-120
REEL: HANNY 24-23-24
HOSE: 200' x 3/4" @ 300 P.S.I.
THREADS: NH

THE INFORMATION CONTAINED IN THIS DRAWING IS THE SOLE PROPERTY OF CASCADE FIRE EQUIPMENT COMPANY. ANY REPRODUCTION IN PART OR AS A WHOLE WITHOUT THE WRITTEN PERMISSION OF CASCADE FIRE EQUIPMENT COMPANY IS PROHIBITED.



CASCADE FIRE EQUIPMENT COMPANY
P.O. BOX 4248 MEDFORD, OR. 97501-
CFE STANDARD PACKAGE D

300 GALLON SKID UNIT

DRAWN BY: L. MOLLMAN
JOB: #

SOLD BY:
DATE: 9/26/2019

REV. A